



- Warehouse Racking, Shelving & Material Handling Solutions
- Steel Lockers & Cabinets.
- Fabrication Of MS, CS, GI, EG, SS & Aluminum.
- HVAC & Firefighting Systems.

Provide Space...

...We design for efficient material handling flow.



ARAMCO VENDOR ID :10108156



About us

SBI, with its team of 20+ years of experience in Material storage & handling systems, boasts a reputation of strong & reliable partner in the industry. Our Expertise is in design, supply & installation of most efficient & reliable Material storage & handling system. Our range of products include - warehouse racking, conveyor system, logistic equipment, customized metal fabrication work & material handling equipment. Our Mega projects delivered to Multinational companies are the witness to our professionalism & commitment to adherence to Standard engineering practices.

Message from the Owner [Managing Director]

Our vision is based on philosophy of quality & commitment. market leaders, our goal is to preserve and enhance our reputation in the industry. Customer satisfaction & professionalism are the means through which we intend to achieve our goal.



Salman Al Issa

Managing Director

OUR PRODUCTS & SERVICES

1. LIGHT DUTY RACKING SYSTEM

- Slot Angle shelving system.
- Bolt free shelving system.
- File compactor / Mobile shelving.

2. MEDIUM DUTY RACKING SYSTEM

- Long span shelving / industrial Racks.
- Garment / Tyre storage Racks.
- Multi-tier & Mezzanine Racking system.

3. HEAVY DUTY RACKING SYSTEM

- Conventional pallet racking.
- Drive in & Drive through pallet racking.
- Cantilever racking system.

4. CONVEYORS & HYDRAULIC SYSTEMS

- Belt/ Roller/ Ball/ Gravity conveyor system.
- Hydraulic scissor lifts with conveyors & work tables.

5. METAL LOCKERS & STORAGE CABINETS

- Fire & chemical resistant safety Cabinets.
- Changing room & Mobile phone steel locker.
- Swing door & Sliding glass door cabinets.
- Weapon & Fire Arm storage systems

6. METAL FABRICATION.

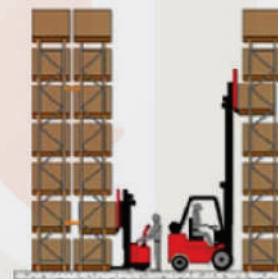
- Customized & standard fabrication of MS, CS, GI, EG, Stainless steel (Food & Non-food grade), Aluminum.

7. LOGISTIC & MATERIAL HANDLING ITEMS

- Docking ramp, Pallets (Wooden/plastic/steel), Hand pallet trucks, ladders, mobile ladders.
- Shipping containers (New & used).
- Plastic chemical storage drums, pallets, Garbage bin.

8. CONTRACTING SERVICES

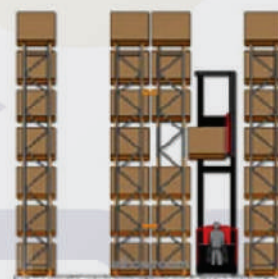
- HVAC, Firefighting, MEP.
- Supply & installation of duct & accessories.



Selective Pallet Rack



Double Deep Pallet Rack



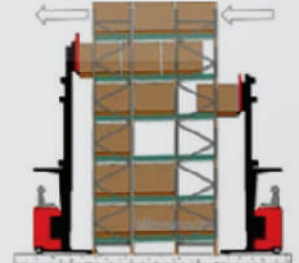
Narrow Aisle Rack



Drive-In Pallet Rack



Push Back Pallet Rack



Pallet Flow/Live Storage

****Please note that products may not always be exactly as pictured in this catalog and we assume no liability, direct or indirect for any errors that may occur in this catalog. SBI reserve right to change or modify the details and specification contained within this catalog without notice.****

1.0 LIGHT DUTY RACKING SYSTEMS

1.1 SLOTTED ANGLE SHELVING SYSTEM

A **Slotted Angle Rack** is made up of vertical and horizontal metal angles with slots that can be adjusted to different height & size. The rack is simply assembled with nuts & bolts and can be easily customized to fit a variety of storage needs.



SYSTEM COMPONENTS & SPECIFICATIONS OF SLOTTED ANGLE RACKS

Slotted Angles	Shelves	Accessories	Finish: Powder Coated.
- 40x40x2x2150mm	300x900x0.8mm with 1 Strengthen Bar	Corner plate	Colour of Angle: Dark Blue, RAL5005
- 40x40x2x2500mm	450x900x0.9mm with 2 Strengthen Bar	Plastic foot base	Shelves & corner plate – Grey, RAL7031
- 40x40x2x3000mm	600x900x0.9mm with 3 strengthen Bar	Bolts & nuts	

1.2 BOLT FREE SHELVING SYSTEM

Bolt free shelving system is a form of industrial storage configured without nuts or bolts. This type of shelving is designed for easy assembly. It is flexible & Modular, cost effective, simple & strong hand loaded shelving system.



CHROME PLATED BOLT FREE WIRE RACK FOR KITCHEN & COLD STORAGE APPLICATION.

1.3 MOBILE SHELVING / FILE COMPACTOR SYSTEM

This system provides storage efficiency of up to 80% of floor space. This efficiency is achieved by eliminating the need for Multiple walk ways. Application in Offices, schools, hospitals etc. The storage bays are installed on tracks & are equipped with mechanism which makes them moveable, and thus provides a walkway/aisle only for the section which needs access.

- Very affective in cases where floor space is limited or too expensive.
- Applicable for storage of confidential documents.
- Facilitates a speedy & organized file/product placement & retrieval system



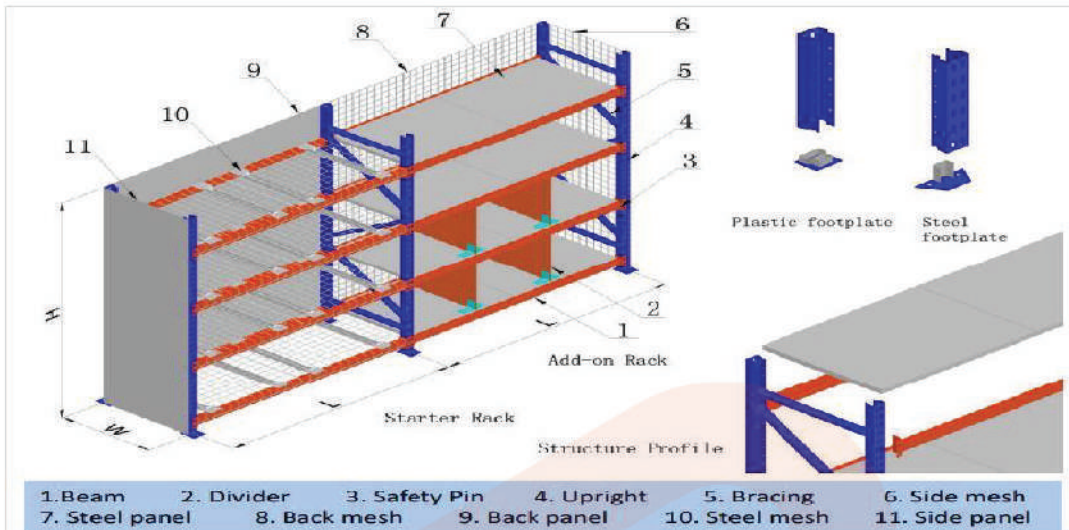
2.0 MEDIUM DUTY RACKING SYSTEMS

2.1 LONGSPAN SHELVING / INDUSTRIAL RACKS

Long span Shelving System is conventional shelving system suitable for manual operations & used for storage of light and medium duty products like boxes, plastic bins, carton, spare parts, merchandising, supermarkets, back stores, etc. It provides wide range of accessories with versatility to suit various businesses.



NOMENCLATURE OF LONG SPAN SHELVING



Tire Racks



Frame Loading Chart ¹⁾			
Size(mm) ²⁾	Thickness(mm) ³⁾	Frame capacity per pair (kg) ⁴⁾	Steel grade ⁵⁾
55*47 ⁶⁾	1.5 ⁷⁾	2000 ⁸⁾	Q235, Q345 ⁹⁾
	2.0 ⁷⁾	3000 ⁸⁾	Q235, Q345 ⁹⁾
55*57 ⁶⁾	1.5 ⁷⁾	3000 ⁸⁾	Q235, Q345 ⁹⁾
	2.0 ⁷⁾	4000 ⁸⁾	Q235, Q345 ⁹⁾

Garments Storage Rack



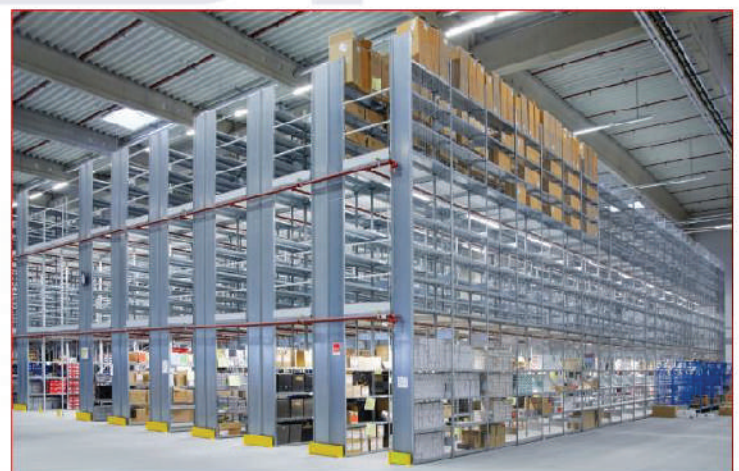
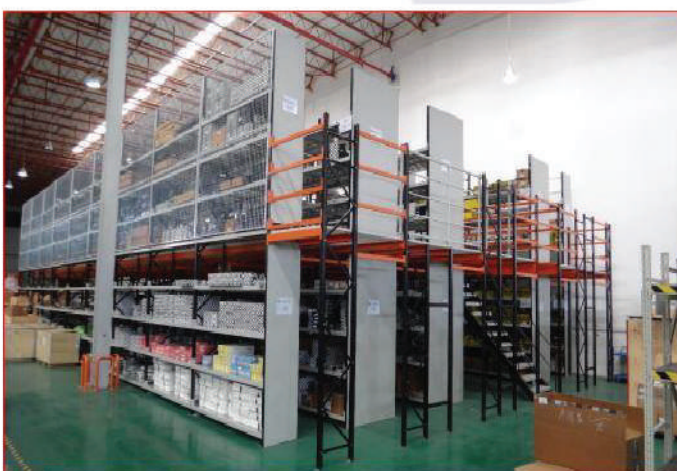
- ◀ 1. Top panel
- ◀ 2. Round tube beam
- ◀ 3. Frame
- ◀ 4. Garments
- ◀ 5. Step beam

Beam Capacity(kg) ¹⁾	Step Beam length(mm) ²⁾							
	1000 ³⁾	1200 ³⁾	1500 ³⁾	1800 ³⁾	2000 ³⁾	2200 ³⁾	2400 ³⁾	2500 ³⁾
Section(mm) ⁴⁾								
50*30*1.5 ⁵⁾	500 ⁶⁾	400 ⁶⁾	300 ⁶⁾	250 ⁶⁾	200 ⁶⁾	/ ⁶⁾	/ ⁶⁾	/ ⁶⁾
60*40*1.5 ⁵⁾	700 ⁶⁾	600 ⁶⁾	500 ⁶⁾	400 ⁶⁾	300 ⁶⁾	250 ⁶⁾	200 ⁶⁾	/ ⁶⁾
80*50*1.5 ⁵⁾	/ ⁶⁾	/ ⁶⁾	800 ⁶⁾	700 ⁶⁾	600 ⁶⁾	500 ⁶⁾	400 ⁶⁾	380 ⁶⁾
80*50*2.0 ⁵⁾	/ ⁶⁾	/ ⁶⁾	/ ⁶⁾	1000 ⁶⁾	900 ⁶⁾	800 ⁶⁾	700 ⁶⁾	600 ⁶⁾

2.2 MULTI TIER/MEZANINE FLOOR RACKING

Multi-tier / Mezzanine Floor Racking is one of the most cost-effective methods to dramatically expand available space in your existing premises.

- Make full use of warehouse space & enhance utilization rate.
- Take advantage of upper space to store goods or shelving.
- Mezzanine Floor can be customized.
- Lightening devices can be set on the mezzanine.



3.0 HEAVY DUTY RACKING SYSTEM

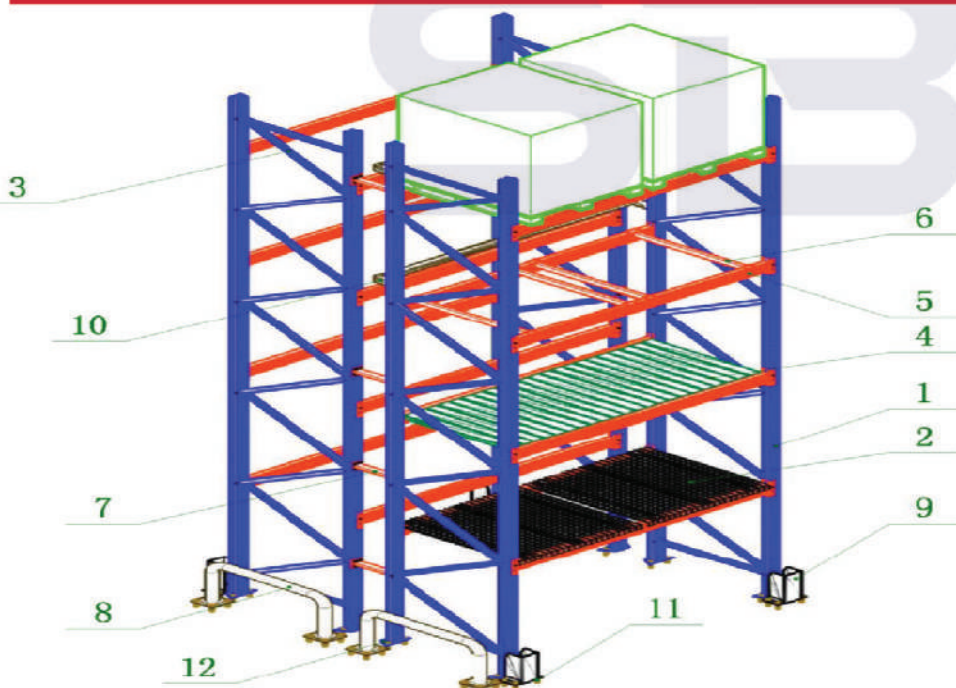
3.1 CONVENTIONAL / SELECTIVE PALLET RACKING

The most commonly used & well accepted racking system, when the material to be stored is placed on pallets. This system can be used for storing wide range of articles of different sizes, due to its ability to adjust the height of levels with help of slots available at every 50mm or 75mm pitch. It Provide 100% accessibility to each pallet and thus facilitates smooth rotation of stock. Applicable in storage of Food materials, chemicals, cold storage, logistical warehouse. Along with the advantages of this system being simple & cost effective, it also has a limitation of having low efficiency in terms of floor space utilization, as low as 35%.

Systems like Drive In system or mobile system are alternative option incase where high storage efficiency is required.



NOMENCLATURE OF PALLET RACKING SYSTEM

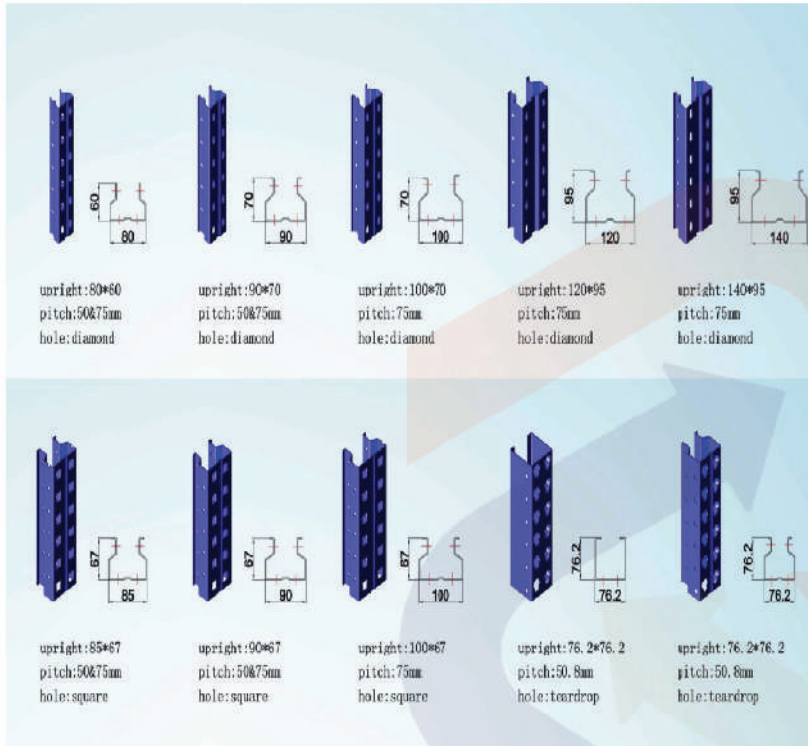


Basic Components

- 1—Frame
- 2---Wire mesh deck
- 3---Brace
- 4---Solid panel
- 5---Beam
- 6---Cross pallet support
- 7---Row spacer
- 8---Crash barrier
- 9---Upright protector
- 10---Back stopper
- 11---Wedge anchor
- 12---Footplate

LOAD CALCULATION

RANGE OF FRAME SECTIONS FOR HEAVY DUTY PALLET RACK

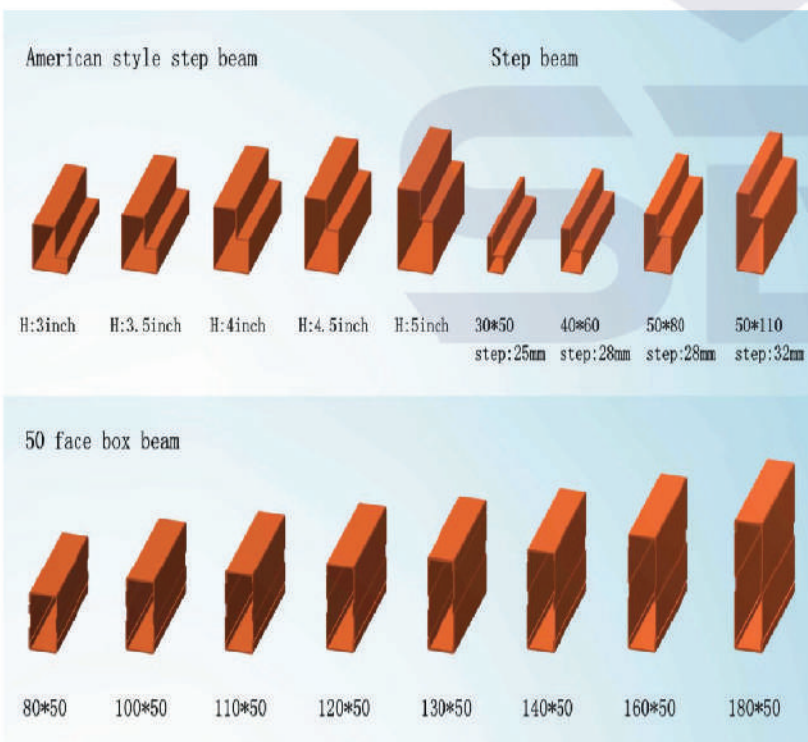


FRAME LOADING CHART FOR HEAVY DUTY RACKING

Frame Loading Chart, first beam level is at 1500mm high

Size(mm)	Thickness(mm)	Frame capacity per bay(kg)	Steel grade
80*60	1.5	4000	Q235, Q345
	2.0	6000	Q235, Q345
85*67	1.8	6000	Q235, Q345
	2.0	8000	Q235, Q345
90*67	2.3	10000	Q235, Q345
	2.0	9000	Q235, Q345
90*70	2.3	11000	Q235, Q345
	2.5	13000	Q235, Q345
	2.0	12000	Q235, Q345
100*67	2.3	13000	Q235, Q345
	2.5	15000	Q235, Q345
	2.0	12000	Q235, Q345
100*70	2.3	14000	Q235, Q345
	2.5	15500	Q235, Q345
	2.0	16000	Q235, Q345
120*95	2.3	19000	Q235, Q345
	2.5	20000	Q235, Q345
	2.5	20000	Q235, Q345
140*95	3.0	25000	Q235, Q345

RANGE OF BEAM SECTIONS FOR HEAVY DUTY PALLET RACK

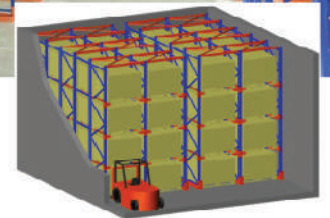


BEAM LOADING CHART FOR HEAVY DUTY RACKING

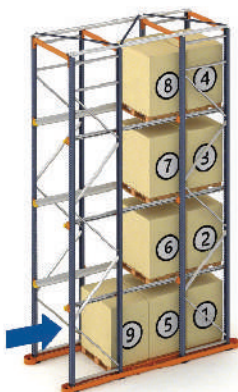
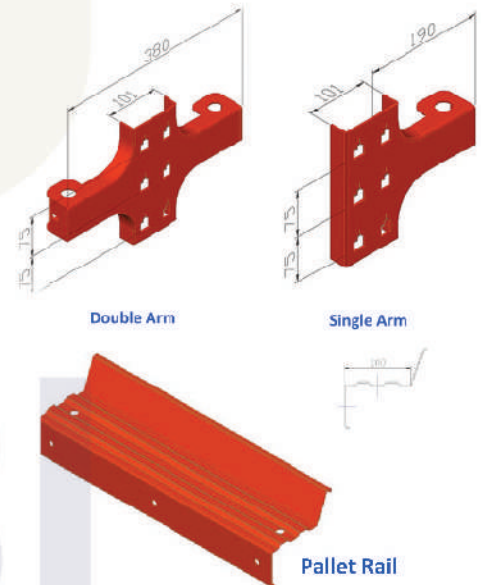
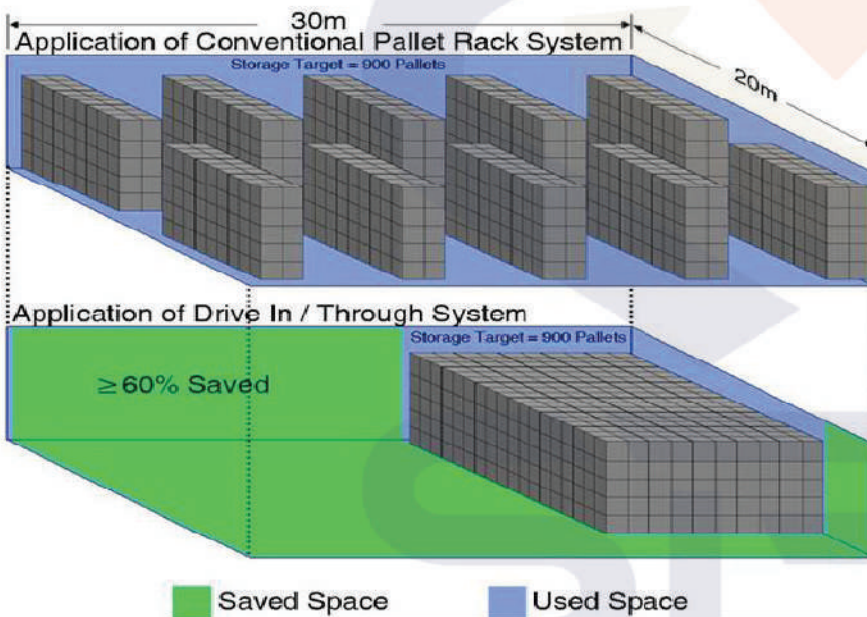
Beam Loading Chart, first beam level is at 1500mm [±]								
Beam Capacity(kg) [±] Section(mm)	50 Face Box Beam Length (mm) [±]							
	1800 [±]	2000 [±]	2300 [±]	2700 [±]	3000 [±]	3300 [±]	3600 [±]	3900 [±]
80*50*1.5 [±]	3000 [±]	2400 [±]	1800 [±]	1300 [±]	900 [±]	700 [±]	700 [±]	700 [±]
100*50*1.5 [±]	5000 [±]	4000 [±]	3000 [±]	2200 [±]	1600 [±]	1300 [±]	1000 [±]	700 [±]
110*50*1.5 [±]	5000 [±]	5000 [±]	3800 [±]	2800 [±]	2000 [±]	1500 [±]	1200 [±]	1000 [±]
120*50*1.5 [±]	5000 [±]	5000 [±]	4500 [±]	3400 [±]	2500 [±]	2000 [±]	1700 [±]	1400 [±]
130*50*1.5 [±]	5000 [±]	5000 [±]	5000 [±]	4000 [±]	3000 [±]	2500 [±]	2000 [±]	1700 [±]
140*50*1.5 [±]	5000 [±]	5000 [±]	5000 [±]	4800 [±]	3800 [±]	3000 [±]	2500 [±]	2000 [±]
160*50*1.5 [±]	5000 [±]	5000 [±]	5000 [±]	5000 [±]	4500 [±]	4000 [±]	3500 [±]	3000 [±]
180*50*1.5 [±]	5000 [±]	5000 [±]	5000 [±]	5000 [±]	5000 [±]	5000 [±]	5000 [±]	5000 [±]
Beam Capacity(kg) [±] Section(mm)	Step Beam length(mm) [±]							
	1000 [±]	1200 [±]	1500 [±]	1800 [±]	2000 [±]	2200 [±]	2400 [±]	2500 [±]
50*30*1.5 [±]	500 [±]	400 [±]	300 [±]	250 [±]	200 [±]	150 [±]	100 [±]	100 [±]
60*40*1.5 [±]	700 [±]	600 [±]	500 [±]	400 [±]	300 [±]	250 [±]	200 [±]	100 [±]
80*50*1.5 [±]	700 [±]	700 [±]	800 [±]	700 [±]	600 [±]	500 [±]	400 [±]	380 [±]
110*50*1.8 [±]	700 [±]	700 [±]	700 [±]	1500 [±]	1200 [±]	1000 [±]	900 [±]	850 [±]

3.2 DRIVE IN PALLET RACKING SYSTEM

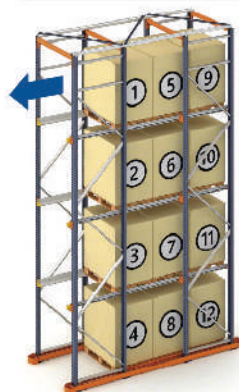
Drive in Pallet Racking provides very compact storage by eliminating maneuvering aisles and optimizes more than 75% of the available area. Very limited selectivity enables systems to be used for large SKU of same articles and can be designed as *FIFO or *LIFO. MHE used are ECB, special Reach trucks.



HOW DOES DRIVE IN SYSTEM SAVES THE FLOOR SPACE ?



SEQUENCE OF LOADING

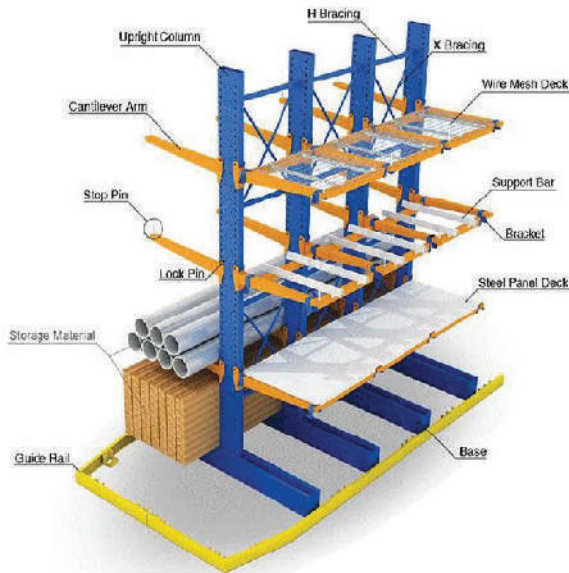


SEQUENCE OF UNLOADING



3.3 CANTILEVER RACKING SYSTEM

Cantilever Racking System - Specifically designed for storage of items with larger lengths like beams, pipes, metal profiles, wood, carpets, textiles, etc. System is built using strong base, vertical columns and unique cantilever arms. Loading can be done via various lifting systems like cranes, side loaders and standard MHEs.



4.0 CONVEYOR SYSTEMS

Conveyor system design & Manufacturing is done after evaluating the nature of the operations being carried out, available space, & client's specific requirement, if any.



Belt conveyors (Motorized)



Roller & Ball conveyors (Manual)



Belt & Roller COMBINATION



BALL & ROLLER COMBINATION



CONVEYORS WITH HYDRAULIC SCISSOR LIFT



CUSTOMISED PROCESS FLOW CONVEYOR

5.0 CABINETS & LOCKERS

5.1 SAFETY CABINETS

Explosion proof, fire proof, industrial safe storage, chemicals storage Industrial safety cabinet is intended to store flammable liquid and some dangerous chemical material and products. It features compact size, storing easily flammable liquid and organic solvent, saving much troubles and time spent on the way to retrieve them in dangerous goods room.



Flammable Liquid storage cabinet



Flame/Fire Resistant cabinet



Steel gas cylinder Cabinets

5.2 LOCKERS & CABINETS



Steel Lockers (Single-tier & Multi-tier)



Cell phone Locker



Swing door Cabinet



Sliding glass door

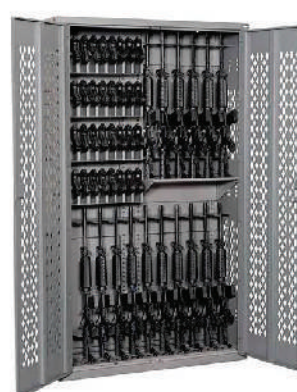
5.3 WEAPON CABINETS



Metallic Gun Cabinet



Metallic Gun Rack



Weapon storage cabinet



Pistol/Handgun locker

6.0 LOGISTICS & MATERIAL HANDLING ITEMS



Mobile ladder



Trolley w/3 shelves



Aluminum Ladder



Hand pallet truck



Hand Trolley



HD Trolley



Reconditioned steel barrels



Steel Pallets



Wooden pallets



Docking steel ramp



Steel work bench



Stackable steel bin



Stackable wire mesh container



Wire mesh enclosure



Steel garbage containers



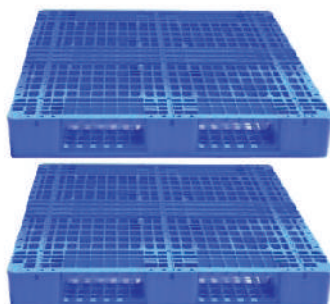
Sitting bench



Stainless steel Racks



Plastic Bins



Plastic Pallets



Garbage Bins



Chemical Storage Drums

HVAC , FIREFIGHTING, PLUMBING, WATER TREATMENT (RO &,SWTP,GWTP)



VRF & PACKAGE UNITS



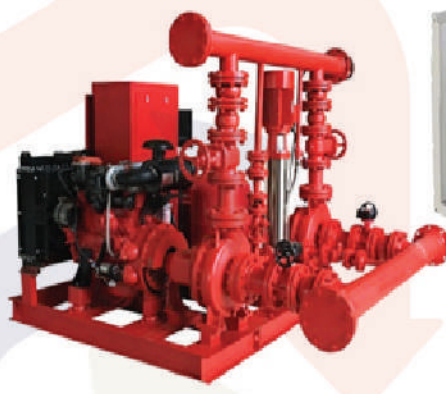
AIR HANDLING UNITS



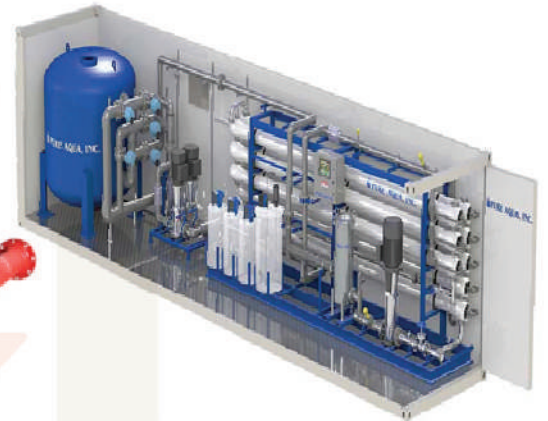
CHILLERS



DUCTING & ACCESSORIES



FIRE FIGHTING



WATER FILTRATION PLANT

- Our Contracting division is an ARAMCO Approved vendor, with 400+ Inhouse Manpower.
- Expertise in Design, Supply ,installation, Startup ,Testing & commissioning of all kinds of MEP systems.
- ARAMCO & SABIC Approved Senior Engineers & QC Engineers.
- Work compliance with ASME ,ASTM, ASHRAE , SMACNA , NFPA , IPC/UPC , AWWA, SBC, IBC etc.

Design & Engineering : Heat Load Calculation, Hydraulic Calculations for pump selection and pipe sizing for Firefighting,HVAC & plumbing systems, Duct sizing and Static pressure calculation, Membrane & pump selection for water treatment system like RO & GWTP plants. IFC, Shopdrawings & As-built drawings preparation.

Type of systems :

HVAC - Chilled water system, VRF/VRV SYSTEM, Package type DX, DX Split etc.

Fire fighting- Wet sprinkler system with complete Pump Set, Dry system like FM200, Novec etc,Foam type , wet chemical type.

Plumbing – Plumbing & drainage system , underground piping of RTR , HDPE, CS etc.

Water Treatment – RO (Reverse osmosis plant), GWTP(Grey water treatment plant), SWTP (Sewage water treatment plant).

Project Type :

Infra Structure ,High rise towers , Restaurants, Residential villas, Pre-casted Villa's , Basement parking Ventilation, Hospitals & clean rooms, Pharmaceutical Labs & production Area, Strair case pressurisation system, Tunnel ventilation systems Etc.

Maintenance :

Annual Maintenance contract , repair & Refurbishment of AC,chillers, Pumps, cooling towers, AHU.

Supply :

Supply of spare parts for AC, chillers, pumps, valves & fittings, Ducts, Dampers & accessories, Treatment chemicals, TAB Works (Air & water balancing, startup & commissioning).

📍 Office #A12, Ali Nasser Tower,
Prince Nasser Bin Abdulaziz St,
Al Adamah, Dammam, 32242, KSA.

☎ +966 138 140 188 ✉ info@sbi-ksa.com

☎ +966 582 966 000 - 0582 663 385 - 0582 060 345



LOCATION

📍 مكتب رقم أ-١٢ - برج علي ناصر

شارع الامير ناصر بن عبد العزيز

الأدهم - الدمام - ٣٢٢٤٢

المملكة العربية السعودية

☎ +٩٦٦ ٥٨٢ ٩٦٦ ٠٠٠ | +٩٦٦ ١٣٨ ١٤٠ ١٨٨